

LAKE ARROWHEAD COMMUNITY SERVICES DISTRICT

MEMORANDUM

DATE: MARCH 24, 2020

TO: BOARD OF DIRECTORS
Lake Arrowhead Community Services District

FROM: 
MATT BROOKS, Operations Manager

SUBJECT: OPERATIONS MANAGER'S REPORT

A. RECOMMENDATION

This is an information item.

B. REASON FOR RECOMMENDATION

This is an information item.

C. BACKGROUND INFORMATION

This report is to give an update on water delivered in 2020, along with providing an update to the Board on past proceeds received from vehicles sent to auction, and a few photos of recent work performed by the Operations Department.

D. FISCAL IMPACT

This is an information item.

E. ENVIRONMENTAL IMPACT

This is an information item.

F. ATTACHMENTS

- 2020 Monthly Report
- 2019 Monthly Report
- February 2020 Water Delivered Annual Analysis
- Ritchie Brothers Auction previous proceeds report
- Operations Dept. photos

**ARROWHEAD WOODS MONTHLY DATA
ACRE FEET**

	(1)	(2)	(3)	(4)	(5)	(6)	(7)	(8)	(9)	(10)	(11)	(12)	(13)	(14)	(15)	(16)	
2020 MONTH	TRANSFER TO GV LAKE	WELLS TO SYSTEM	BERNINA PLANT	CEDAR GLEN PLANT	COMBINED PLANT	COMBINED PLANT BACKWASH	BERNINA RECYCLE	CLAWA PURCHASE (a)	ROTW CLAWA PURCHASE (a)	BRENTWOOD CLAWA PURCHASE (a)	COMBINED PURCHASE (a)	LAKE DRAW (b)	DELIVERED TO DISTRIBUTION (c)	METERED WATER	STORAGE VOLUME (e)	STORAGE VOLUME CHANGE +/-	UN-METERED WATER (d)
JANUARY	0.00	15.43	24.03	31.20	55.23	4.72	1.50	0.00	0.00	0.00	55.23	67.44	55.99	26.57	0.23	11.22	
FEBRUARY	0.00	14.64	46.73	0.00	46.73	4.48	2.79	0.00	0.00	0.00	46.73	59.68	48.78	26.80	0.00	10.90	
MARCH	0.00				0.00					0.00	0.00	0.00		26.80	0.00	0.00	
1ST QUARTER	0.00	30.07	70.76	31.20	101.96	9.20	4.29	0.00	0.00	0.00	101.96	127.12	104.77	80.17	0.23	22.12	
APRIL	0.00				0.00					0.00	0.00	0.00			0.00	0.00	
MAY	0.00				0.00					0.00	0.00	0.00			0.00	0.00	
JUNE	0.00				0.00					0.00	0.00	0.00			0.00	0.00	
2ND QUARTER	0.00	0.00	0.00	0.00	0.00	0.00	0.00	0.00	0.00	0.00	0.00	0.00	0.00	0.00	0.00	0.00	
SEMI-ANNUAL	0.00	30.07	70.76	31.20	101.96	9.20	4.29	0.00	0.00	0.00	101.96	127.12	104.77	80.17	0.23	22.12	
JULY	0.00				0.00					0.00	0.00	0.00			0.00	0.00	
AUGUST	0.00				0.00					0.00	0.00	0.00			0.00	0.00	
SEPTEMBER	0.00				0.00					0.00	0.00	0.00			0.00	0.00	
3RD QUARTER	0.00	0.00	0.00	0.00	0.00	0.00	0.00	0.00	0.00	0.00	0.00	0.00	0.00	0.00	0.00	0.00	
OCTOBER	0.00				0.00					0.00	0.00	0.00			0.00	0.00	
NOVEMBER	0.00				0.00					0.00	0.00	0.00			0.00	0.00	
DECEMBER	0.00				0.00					0.00	0.00	0.00			0.00	0.00	
4TH QUARTER	0.00	0.00	0.00	0.00	0.00	0.00	0.00	0.00	0.00	0.00	0.00	0.00	0.00	0.00	0.00	0.00	
ANNUAL TOTAL	0.00	30.07	70.76	31.20	101.96	9.20	4.29	0.00	0.00	0.00	101.96	127.12	104.77	80.17	0.23	22.12	

(a) CLAWA consumption numbers are based upon monthly billing statements provided by CLAWA. CLAWA reads these meters on or near the 24th of each month, so the numbers may not be an actual representation of water consumed for said calendar month.

(b) Lake Draw = (1) + (5)

(c) Delivered to Distribution = (2) + (5) - (6) + (7) + (10)

(d) Un-Metered Water = ((12) - (13)) - (15)

(e) Storage Volume calculated 8:00 am the 1st of every month.

**ARROWHEAD WOODS MONTHLY DATA
ACRE FEET**

	(1)	(2)	(3)	(4)	(5)	(6)	(7)	(8)	(9)	(10)	(11)	(12)	(13)	(14)	(15)	(16)	
2019 MONTH	TRANSFER TO GV LAKE	WELLS TO SYSTEM	BERNINA PLANT	CEDAR GLEN PLANT	COMBINED PLANT	COMBINED PLANT BACKWASH	BERNINA RECYCLE	CLAWA PURCHASE (a)	ROTW (a)	BRENTWOOD CLAWA PURCHASE (a)	COMBINED PURCHASE (a)	LAKE DRAW (b)	DELIVERED TO DISTRIBUTION (c)	METERED WATER	STORAGE VOLUME (e)	STORAGE VOLUME CHANGE +/-	UN-METERED WATER (d)
JANUARY	0.00	13.17	0.00	60.63	60.63	4.33	0.00	0.00	0.00	0.00	0.00	60.63	69.47	56.45	23.82	0.80	12.22
FEBRUARY	0.00	15.90	1.38	55.11	56.49	4.54	0.00	0.00	0.00	0.00	0.00	56.49	67.85	53.02	24.62	2.09	12.74
MARCH	0.00	18.62	11.93	34.18	46.11	3.84	0.29	0.00	0.00	0.00	0.00	46.11	61.18	50.91	26.71	-0.28	10.55
1ST QUARTER	0.00	47.69	13.31	149.92	163.23	12.71	0.29	0.00	0.00	0.00	0.00	163.23	198.50	160.38	75.15	2.61	35.51
APRIL	0.00	19.37	51.07	0.00	51.07	4.56	2.37	0.00	0.00	0.00	0.00	51.07	68.25	57.30	26.43	0.00	10.95
MAY	0.00	17.66	83.86	0.00	83.86	6.93	4.26	0.00	0.00	0.00	0.00	83.86	98.85	84.74	26.37	1.78	12.33
JUNE	0.00	16.72	120.37	0.00	120.37	9.54	6.42	0.00	2.34	2.34	2.34	120.37	136.31	121.85	28.15	-3.44	17.90
2ND QUARTER	0.00	53.75	255.30	0.00	255.30	21.03	13.05	0.00	2.34	2.34	2.34	255.30	303.41	263.89	80.95	-1.66	41.18
SEMI-ANNUAL	0.00	101.44	268.61	149.92	418.53	33.74	13.34	0.00	2.34	2.34	2.34	418.53	501.91	424.27	156.10	0.95	76.69
JULY	0.00	17.38	114.45	53.40	167.85	14.46	5.79	0.00	7.63	7.63	7.63	167.85	184.19	169.40	24.71	3.29	11.50
AUGUST	0.00	16.93	78.28	59.14	137.42	11.49	5.69	0.00	31.19	31.19	31.19	137.42	179.74	165.47	28.00	-1.97	16.24
SEPTEMBER	0.00	15.91	65.75	78.89	144.64	9.98	3.96	0.00	5.49	5.49	5.49	144.64	160.02	144.37	26.03	0.90	14.75
3RD QUARTER	0.00	50.22	258.48	191.43	449.91	35.93	15.44	0.00	44.31	44.31	44.31	449.91	523.95	479.24	78.74	2.22	42.49
OCTOBER	0.00	16.17	72.36	41.78	114.14	12.70	1.71	0.00	0.00	0.00	0.00	114.14	119.32	105.48	26.93	-0.85	14.69
NOVEMBER	0.00	15.01	38.71	23.65	62.36	5.03	2.46	0.00	0.00	0.00	0.00	62.36	74.80	64.13	26.08	0.34	10.33
DECEMBER	0.00	15.22	39.49	21.45	60.94	6.11	1.65	0.00	0.00	0.00	0.00	60.94	71.70	59.54	26.42	0.15	12.01
4TH QUARTER	0.00	46.40	150.56	86.88	237.44	23.84	5.82	0.00	0.00	0.00	0.00	237.44	265.82	229.15	79.43	-0.36	37.03
ANNUAL TOTAL	0.00	198.06	677.65	428.23	1105.88	93.51	34.60	0.00	46.65	46.65	46.65	1105.88	1291.68	1132.66	314.27	2.81	156.21

(a) CLAWA consumption numbers are based upon monthly billing statements provided by CLAWA. CLAWA reads these meters on or near the 24th of each month, so the numbers may not be an actual representation of water consumed for said calendar month.

(b) Lake Draw = (1) + (5)

(c) Delivered to Distribution = (2) + (5) - (6) + (7) + (10)

(d) Un-Metered Water = ((12) - (13)) - (15)

(e) Storage Volume calculated 8:00 am the 1st of every month.

March 24, 2020

February 2020 Water Delivered Annual Analysis

- In February 2020 (59.68 AF), consumption was down by 12% when compared to February 2019 (67.85 AF). These numbers are based off column (12) on the Report, and only counts water delivered to the Distribution System.
- February 2020 Lake Draw = 46.73 AF vs February 2019 = 56.49 AF.
- February 2020 Wells to System = 14.64 AF vs February 2019 = 15.90 AF.
- February 2020 total CLAWA purchase = 0 AF vs February 2019 = 0 AF.



Print Date: 2019/12/14
 Print Time: 17:45

Owner's Detail Report

N02

Sale Information:

Perris
2019/12/13
2019265

Owner	N02	Lake Arrowhead Community Services	Tony Carricaburu
		PO Box 700	Phone: 909 3367161
		Lake Arrowhead CA, USA 923520700	Fax:
			SHELTON CHAMPION

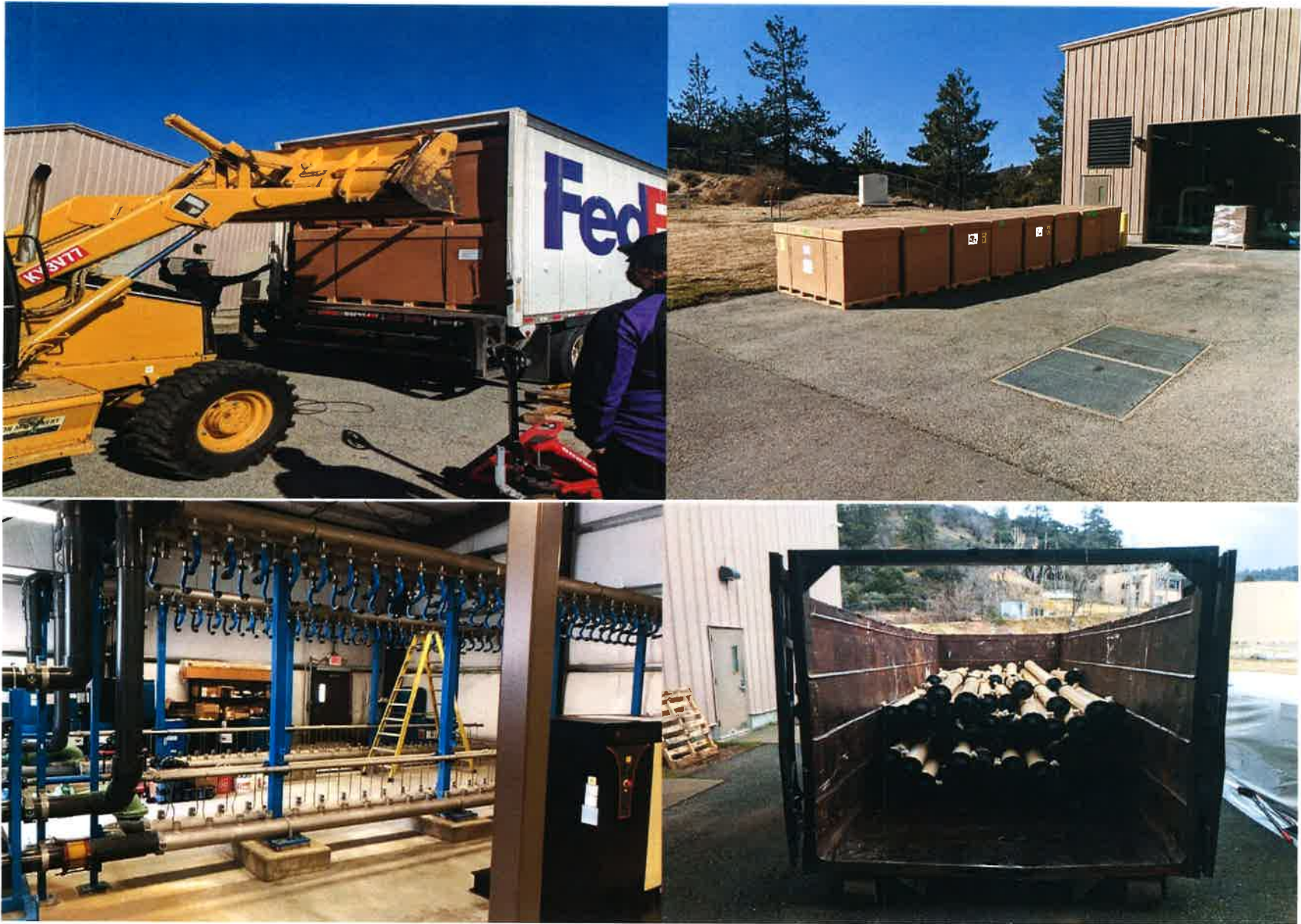
Lot	Scd	Description	S/N	Sold Price	Buyer
130	4	Caterpillar 416B 4x4 Loader Backhoe	8SG02247	17,500.00	33222
131	3	John Deere 410C 4x4 Loader Backhoe	T0410C8772304	7,500.00	985
922	1	Ford F600 Flatbed Truck	1FDMF60H2HVA23654	300.00 *	979
1739	2	Chevrolet Tahoe Sport Utility Vehicle	1GNEK13T52R303812	2,750.00 *	1183

Total for this Owner	28,050.00
-----------------------------	------------------

Lots subject to documentation fee	2 X 65.00		130.00
Proceeds of Lots sold for 2,500.00 or less		300.00
Proceeds of Lots sold for more than 2,500.00		27,750.00

All amounts stated in USD

Page: 1



Grass Valley WWTTP Pall module removal



Grass Valley WWTP Pall module installation